

SENEGAL



2016 IHP+ MONITORING ROUND National performance review

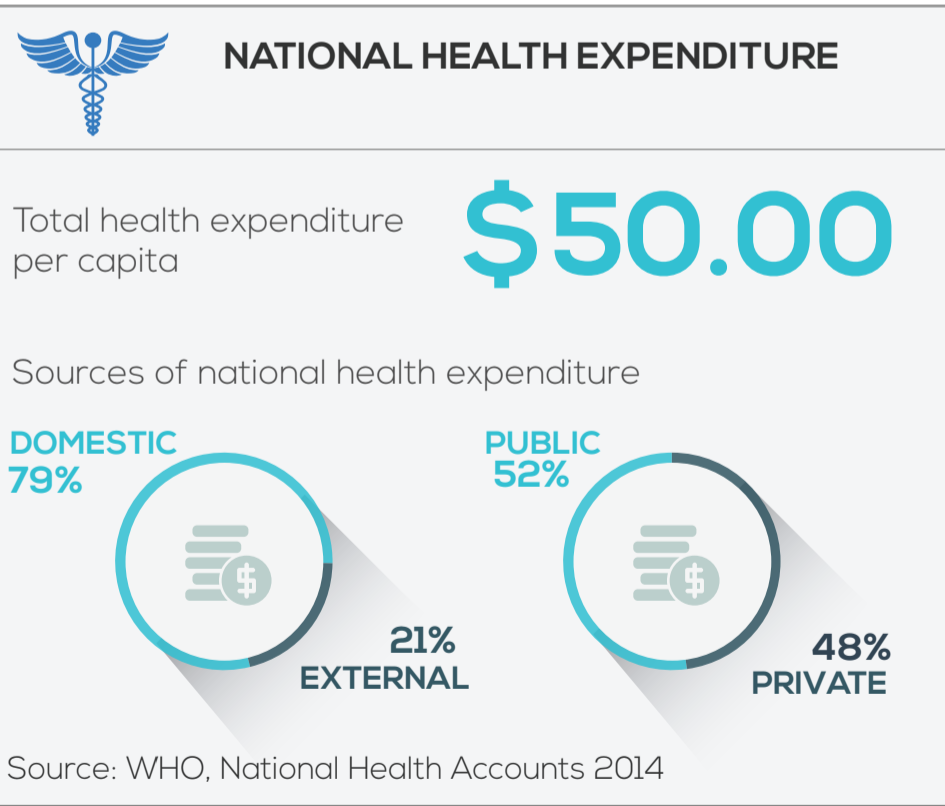
HOW TO READ THE COUNTRY PROFILE

All data presented on this visual aid are self-reported by the Ministry of Health (MoH), development partners (11 DPs out of 16 participated), civil society organisations (14 CSOs participated) and private sector representatives (19 PS participated) supporting the health sector. All data provided by DPs, CSOs and PS have in principle been validated by MoH.

The 8 Effective Development Cooperation (EDC) practices in health are captured in 4 commitments. The first three commitments present the performance of the government and DPs against 6 EDC practices. The last commitment also includes the opinion of the CSOs and PS on the EDC practices relevant to their engagement.

Where possible, trends in performance are documented over 4 monitoring rounds (2007, 2011, 2013 and 2015). When relevant, a comment relative to the EDC practice is provided in a text box.

For more detailed and disaggregated information on the data presented please visit www.internationalhealthpartnership.net/senegal.



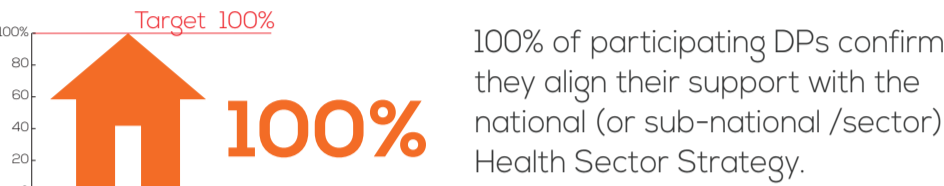
COMMITMENT

TO ESTABLISH STRONG HEALTH SECTOR STRATEGIES WHICH ARE JOINTLY ASSESSED, AND STRENGTHEN ACCOUNTABILITY



PARTNERS SUPPORT A SINGLE NATIONAL HEALTH STRATEGY

Alignment of support against the Health Sector Strategy



Was the national health sector plan jointly assessed?



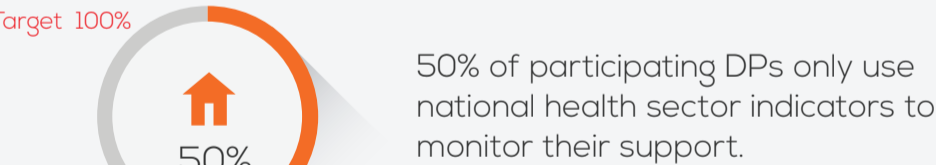
Stakeholders that supported the joint assessment

L'Etat comme les partenaires utilisent le PNDS comme referentiel pour les négociations sur le financement du Secteur. Ainsi, avec l'introduction du DPPD qui est un document de planification pluriannuel des Dépenses et les PTA qui sont les outils opérationnels, les appuis au développement sont mieux structurés



MUTUAL ACCOUNTABILITY IS STRENGTHENED

A national M&E plan for the National Health Strategy exists?



La régularité de la tenue des comités internes de suivi (CIS) précédés des Missions Conjointes de Suivi (MCS) et de la revue annuelle nationale (RACN) concertée et les Revues annuelles Concertées régionales illustrent les efforts de redevabilité mutuelle. L'ensemble des programmes appuyés par les PTF dispose de manuel de procédures structurant la redevabilité mutuelle.

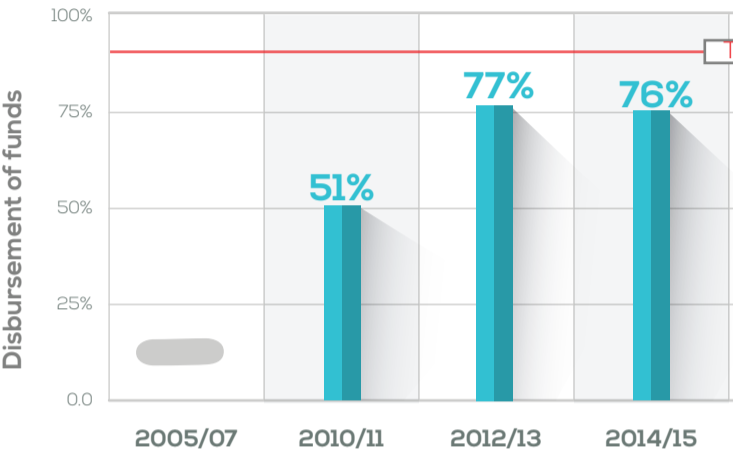
COMMITMENT

TO IMPROVE THE FINANCING, PREDICTABILITY AND FINANCIAL MANAGEMENT OF THE HEALTH SECTOR

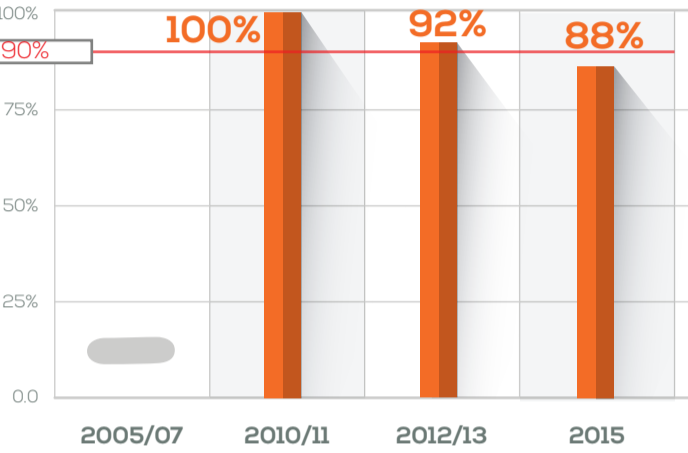


HEALTH DEVELOPMENT COOPERATION IS MORE PREDICTABLE

Government funds disbursed according to agreed schedules

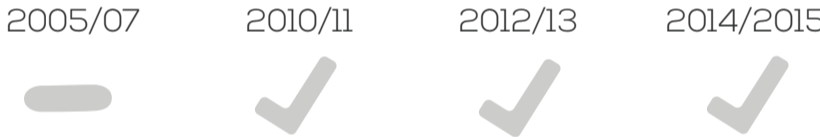


DP funds disbursed to the government according to agreed schedules



Predictability of funds for the future

Rolling 3 year budget or Mid-Term Expenditure Framework in place:



45% of participating DPs have communicated their planned resources for the next 3 years to the MoH.

L'existence d'une cellule de passation des marchés au niveau du Cabinet et la mise en place d'instruments et de ressources pour le renforcement des capacités illustrent la volonté de l'Etat d'inscrire ses actions dans la transparence. L'appui budéetaire est l'option prise par la majeure partie des PTF. D'autres partenaires, même s'ils gèrent directement leurs ressources, utilisent les procédures actuelles de l'Etat en matière de gestion budgétaire.



HEALTH AID IS ON BUDGET



L'appui budéetaire est l'option prise par la majeure partie des PTF. D'autres partenaires même s'ils gèrent directement leurs ressources, utilisent les procédures actuelles de l'Etat en metiere de gestion budgétaire.

LEGEND

Data colour codes



Government



Private Sector



Development Partners



Civil Society

Symbols



Yes



Did not participate in monitoring round



No



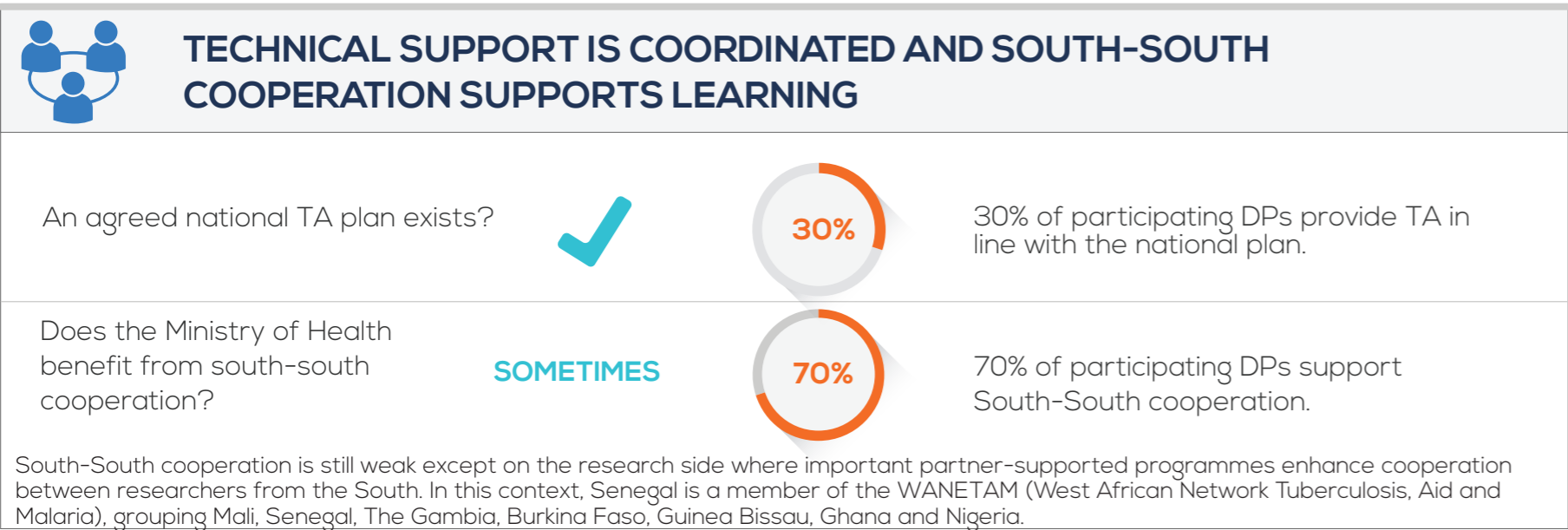
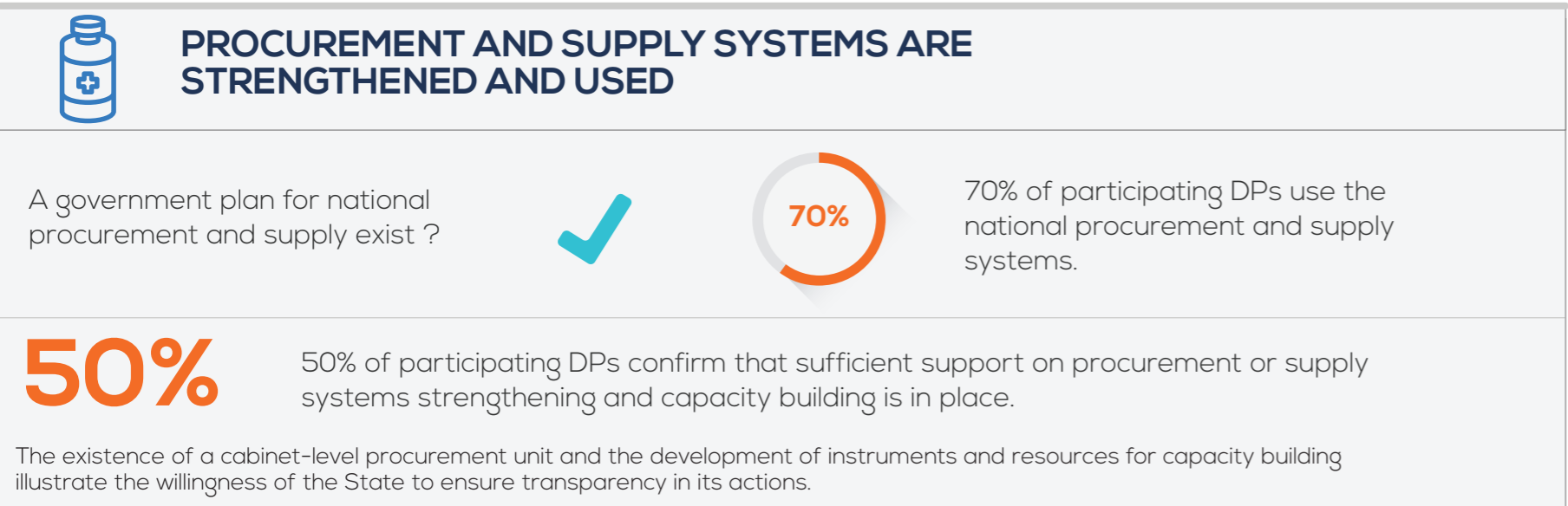
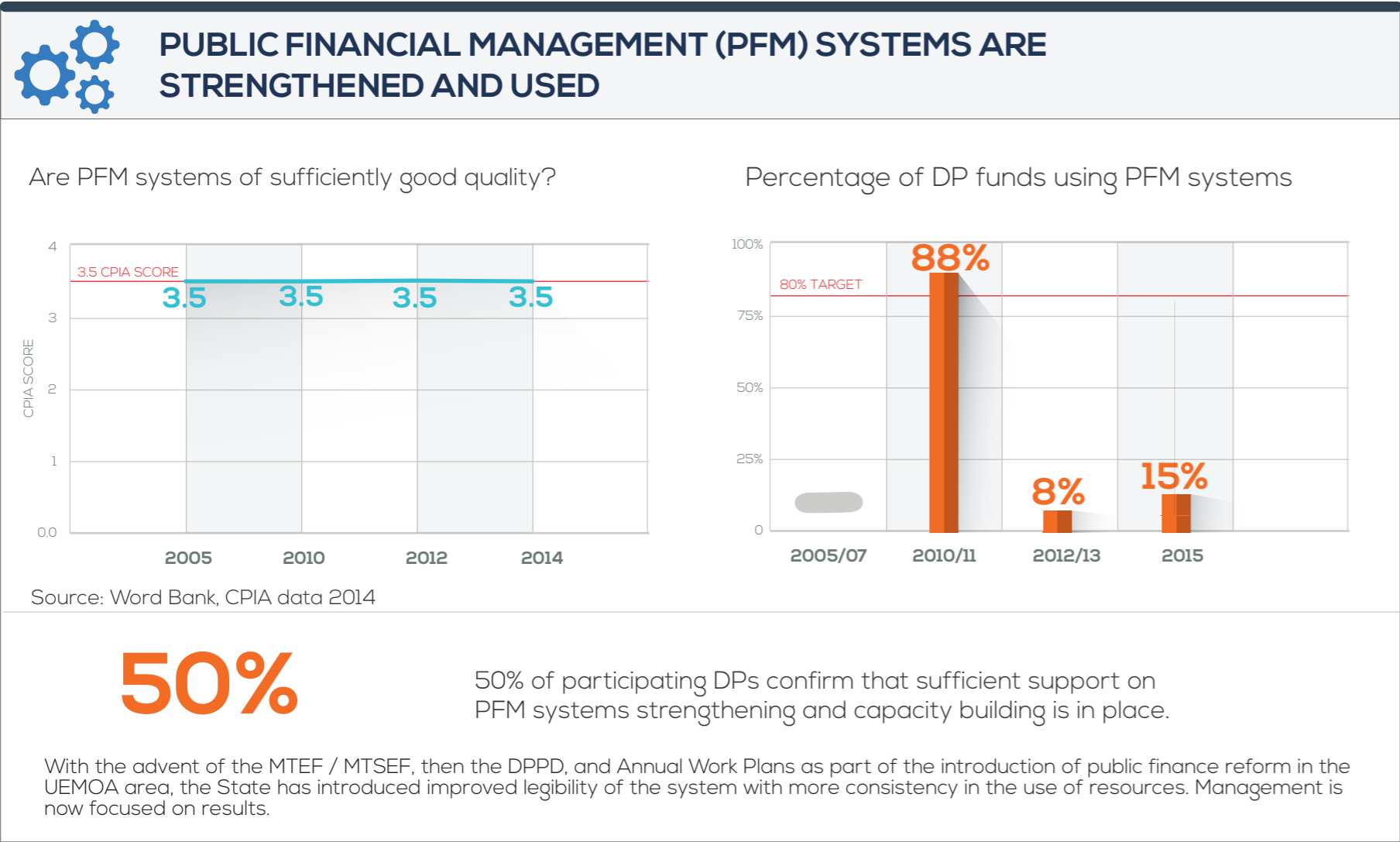
Unknown or not applicable

2016 IHP+ MONITORING ROUND

ihp results

COMMITMENT

TO ESTABLISH, STRENGTHEN AND USE COUNTRY SYSTEMS



COMMITMENT

TO CREATE AN ENABLING ENVIRONMENT FOR CIVIL SOCIETY ORGANISATIONS AND PRIVATE SECTOR PARTICIPATION IN THE HEALTH SECTOR

